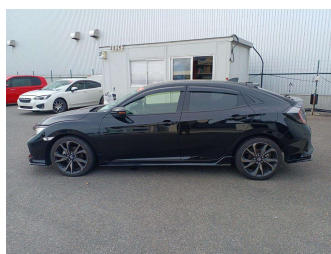
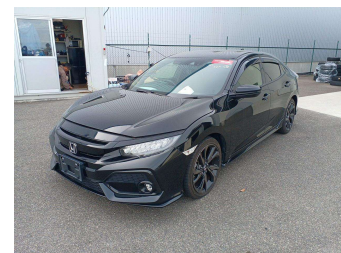
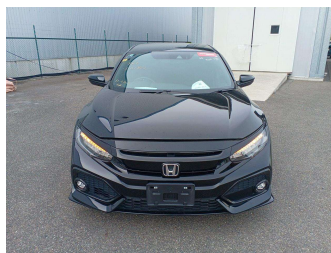


2019 Honda Civic 1.5L TURBO, ALLOYS, ADAPTIVE



Purchase Price **\$28,495**

Includes GST
Excludes on-road costs of \$595

Finance may be available on this vehicle. Ask one of our friendly staff for more information.

Gain peace of mind with Mechanical Breakdown Insurance. **Ask us how.**

- Top features**
- » ABS brakes
 - » Air Conditioning
 - » CD Player
 - » Central Locking
 - » Climate Control
 - » Driver airbag
 - » Factory CD(s)
 - » Passenger airbag
 - » Power steering

Body Style
4 door, Hatchback

Odometer
35,500 km

Engine
1500 cc, Petrol

Fuel Type
Petrol

Transmission
Auto

Wheels
18", Factory Alloys

VIN
-

Interior
Black

Safety



Based on 2025 UCSR rating for 16-21 models

Reg No.

-

Ext Colour
Black

History

-

Seats
5 seats

CO2 Emissions
★★★★☆
150 grams/km

Energy Economy
★★★★☆☆

Annual fuel cost of \$2,550
6.5L per 100km

Cost per year is an estimate based on petrol price of \$2.80 per litre and an average distance of 14000 km. Emissions and Energy Economy figures standardised to 3P WLTP.

Stock ID: 4867



V Do Motors | Phone 09 6360058 | Email sales@vdomotors.co.nz
33, Alfred St, Onehunga, Auckland 1061, New Zealand
www.vdomotors.co.nz