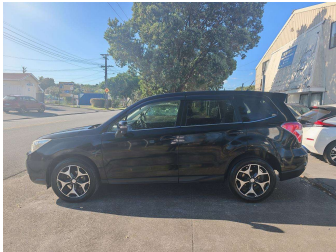
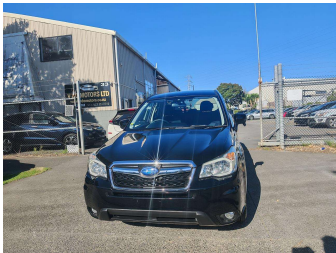


# 2014 Subaru Forester 2.0I-S EYESIGHT, 4WD, PUSH



### Purchase Price

Includes GST  
Excludes on-road costs of \$595

**\$15,895**

Finance may be available on this vehicle. Ask one of our friendly staff for more information.

Gain peace of mind with Mechanical Breakdown Insurance. **Ask us how.**

### Top features

- » ABS brakes
- » Air Conditioning
- » Central Locking
- » Climate Control
- » Driver airbag
- » Passenger airbag
- » Power steering

### Body Style

**4 door, SUV / 4x4**

### Odometer

**65,000 km**

### Engine

**2000 cc, Petrol**

### Fuel Type

**Petrol**

### Transmission

**Auto, 4WD**

### Wheels

**Factory Alloys**

### VIN

**7AT0GF17X25034962**

### Interior

**Black**

### Safety



Based on 2024 UCSR rating for 12-18 models

### Reg No.

-

### Ext Colour

**Black**

### History

-

### Seats

**5 seats**

### CO2 Emissions

★★★★★☆☆

**173 grams/km**

### Energy Economy

★★★☆☆☆☆

**Annual fuel cost of \$2,900  
7.4L per 100km**

Cost per year is an estimate based on petrol price of \$2.80 per litre and an average distance of 14000 km. Emissions and Energy Economy figures standardised to 3P WLTP.

**Stock ID: 4492**



V Do Motors | Phone 09 6360058 | Email sales@vdomotors.co.nz  
33 , Alfred St, Onehunga, Auckland 1061, New Zealand  
www.vdomotors.co.nz