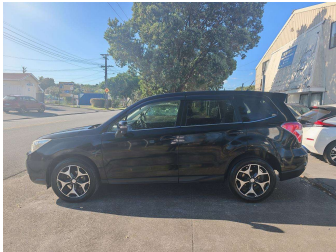
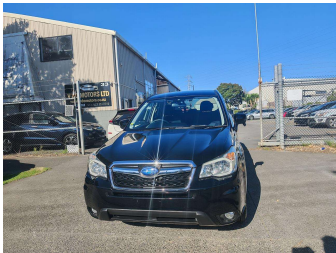


# 2014 Subaru Forester 2.0I-S EYESIGHT, 4WD, PUSH



### Purchase Price

Includes GST  
Excludes on-road costs of \$595

**\$16,495**

Finance may be available on this vehicle. Ask one of our friendly staff for more information.

Gain peace of mind with Mechanical Breakdown Insurance. **Ask us how.**

### Top features

- » ABS brakes
- » Air Conditioning
- » Central Locking
- » Climate Control
- » Driver airbag
- » Passenger airbag
- » Power steering

Body Style  
**4 door, SUV / 4x4**

Odometer  
**65,000 km**

Engine  
**2000 cc, Petrol**

Fuel Type  
**Petrol**

Transmission  
**Auto, 4WD**

Wheels  
**Factory Alloys**

VIN  
**7AT0GF17X25034962**

Interior  
**Black**

Safety



Based on 2024 UCSR rating for 12-18 models

Reg No.

-

Ext Colour  
**Black**

History  
-

Seats  
**5 seats**

CO2 Emissions  
**★★★★☆**  
**173 grams/km**

Energy Economy  
**★★☆☆☆**

**Annual fuel cost of \$2,900**  
**7.4L per 100km**

Cost per year is an estimate based on petrol price of \$2.80 per litre and an average distance of 14000 km. Emissions and Energy Economy figures standardised to 3P WLTP.

**Stock ID: 4492**



V Do Motors | Phone 09 6360058 | Email sales@vdomotors.co.nz  
33 , Alfred St, Onehunga, Auckland 1061, New Zealand  
www.vdomotors.co.nz